

StoTherm® ci

Soffit: Insulated and Unvented

Detail No.: 52s.30
Date: June 2017

Notes:

1. Continue StoGuard air and moisture barrier onto dissimilar material or construction where required after verifying substrate material compatibility. Refer to Sto Detail 52s.53 for typical detailing of inside corner if substrate material or construction is dissimilar. Refer to Sto Detail 52s.54A if substrate material is similar at inside corner.

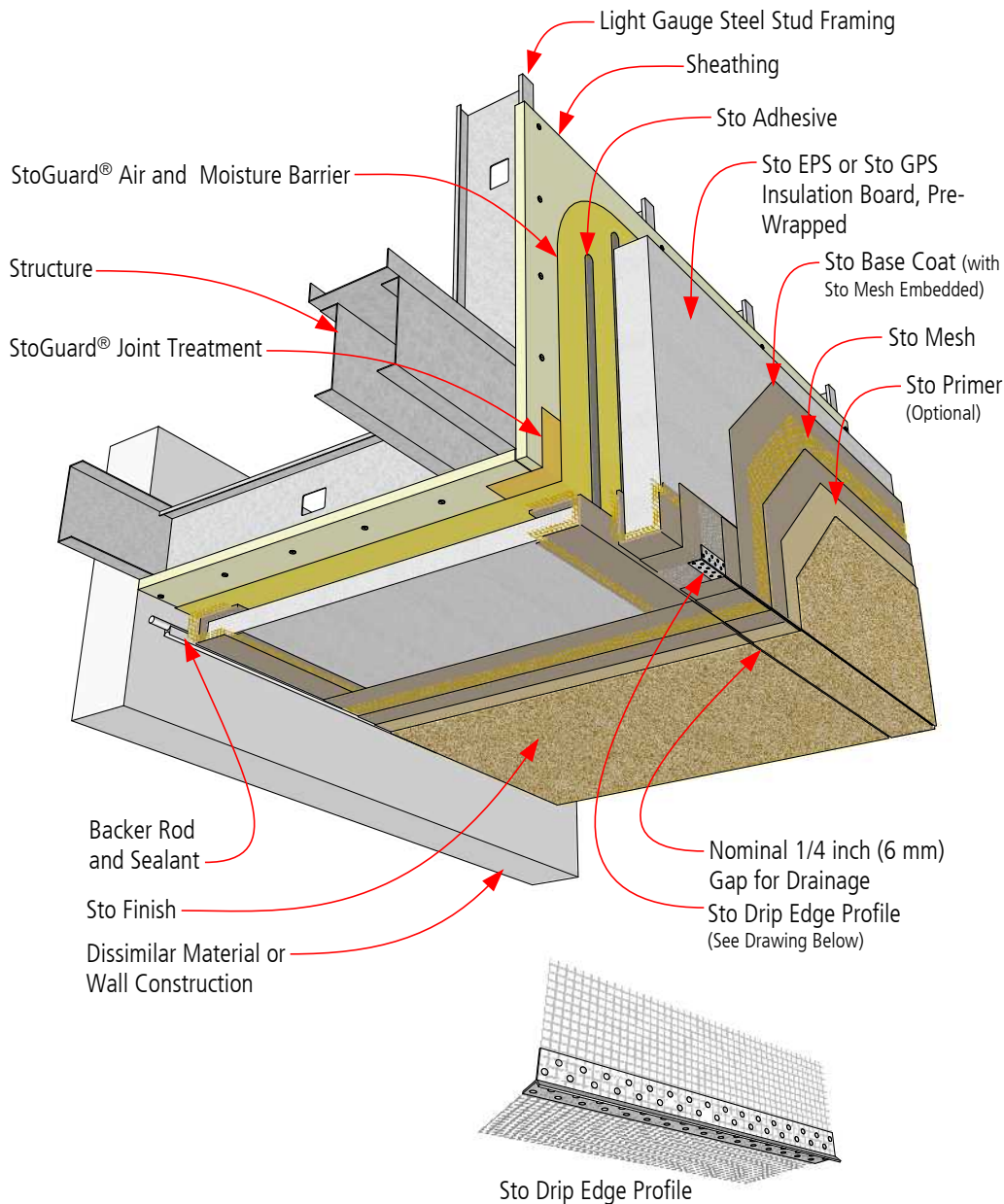
2. 4" (10 cm) thick insulation board typically required for proper lap of accessory with mesh "tail." For thinner sections of insulation board pre-wrap insulation board with Sto base coat and mesh.

3. Multi-story buildings where construction is required to be Noncombustible may require special examination of soffit conditions with foam plastic insulation. Verify with professional fire protection engineer and building code official.

- Refer to StoTherm ci System Bulletins and Specifications, Sto Product Bulletins, Tech Hotlines, and Sto Installation and Maintenance Guides for complete information.

- Refer to applicable CCMC Evaluation Reports for building code compliance information.

IMPORTANT: Components not identified as Sto are furnished by other manufacturers and are not necessarily installed by trades who install Sto products. Refer to project specific contract documents.



Property of Sto Corp. All Rights Reserved

ATTENTION

Sto products are intended for use by qualified professional contractors, not consumers, as a component of a larger construction assembly as specified by a qualified design professional, general contractor or builder. They should be installed in accordance with those specifications and Sto's instructions. Sto Corp. disclaims all, and assumes no, liability for on-site inspections, for its products applied improperly, or by unqualified persons or entities, or as part of an improperly designed or constructed building, for the nonperformance of adjacent building components or assemblies, or for other construction activities beyond Sto's control. Improper use of Sto products or use as part of an improperly designed or constructed larger assembly or building may result in serious damage to Sto products, and to the structure of the building or its components.

STO CORP. DISCLAIMS ALL WARRANTIES EXPRESSED OR IMPLIED EXCEPT FOR EXPLICIT LIMITED WRITTEN WARRANTIES ISSUED TO AND ACCEPTED BY BUILDING OWNERS IN ACCORDANCE WITH STO'S WARRANTY PROGRAMS WHICH ARE SUBJECT TO CHANGE FROM TIME TO TIME. For the fullest, most current information on proper application, clean-up, mixing and other specifications and warranties, cautions and disclaimers, please refer to the Sto Corp. website, www.stocorp.com.

www.stocorp.com

